

# NMCNP Study Aids: Shrubs & Vines that May Appear on the NMCNP exam.

These materials were donated by the author to the CNGA in recognition of scholarships given by the Colorado Nursery Research and Education Foundation (CNREF) in support of students at FRCC.

**If you find these materials helpful, please donate to CNREF today!**

Non-exclusive use of the following photos/materials is hereby granted to the Colorado Nursery & Greenhouse Association for use by individuals seeking Certification as a Colorado Certified Nursery Professional. The Author reserves all rights to these Images/Materials. Users of this presentation do not acquire any copyright, ownership or equivalent rights in or to any Images. Users must contact the Author if they wish to use any of these photos for other purposes.

## Author:

Ray Daugherty, CCNP No. 369,  
Horticulture & Landscape Technologies Faculty, Front Range Community College  
rdaugh4908@aol.com or Tel. 303-246-4414.  
Keith A Williamson, CCNP No. 115 (2013 New Mexico supplement)

*Amelanchier* species  
(am-el-AN-keer)  
Saskatoon Serviceberry



*Amorpha canescens*

(ah-MOR-fah kan-ESS-senz)

Leadplant Amorpha





© Ray Daugherty

*Amorpha fruticosa*

(ah-MOR-fah fru-ti-KO-sa)

Desert False Indigo

*Aronia melanocarpa* (*Photinia melanocarpa*)

(ah-ROE-nee-ah mel-an-oh-KAR-pah)

Black Chokeberry





*Artemisia filifolia*

(ar-tem-EE-zsa fil-ih-FOL-ee-a)

Sand Sage, Threadleaf Sage

*Atriplex canescens*  
(AH-tri-plex kah-NES-enz)  
Four-wing Saltbush





*Atriplex confertifolia*

(AH-tri-plex kon-fir-tih-FOL-ee-a)

Shadscale Saltbush



*Berberis*'Tara'

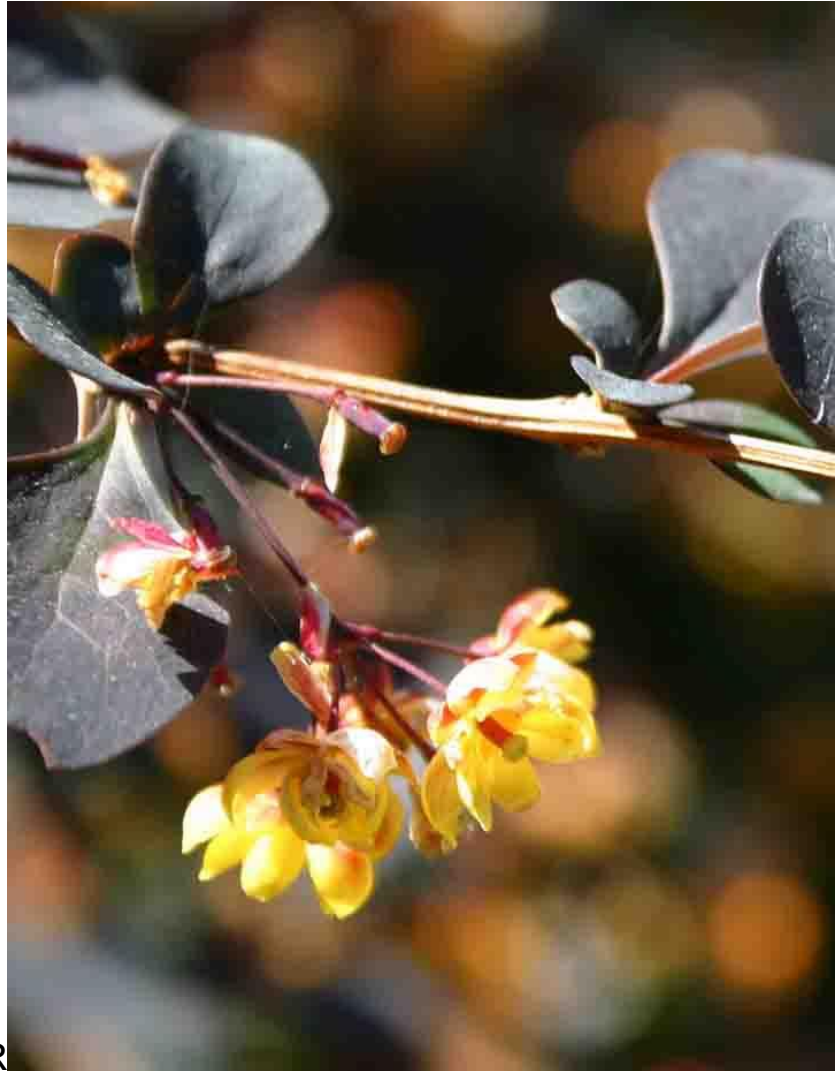
(BER-ber-iss)

Emerald Carousel Barberry



*Berberis thunbergii* cultivars  
(BER-ber-iss thun-BER-jee-eye)  
Japanese Barberry





*Buddleja alternifolia*

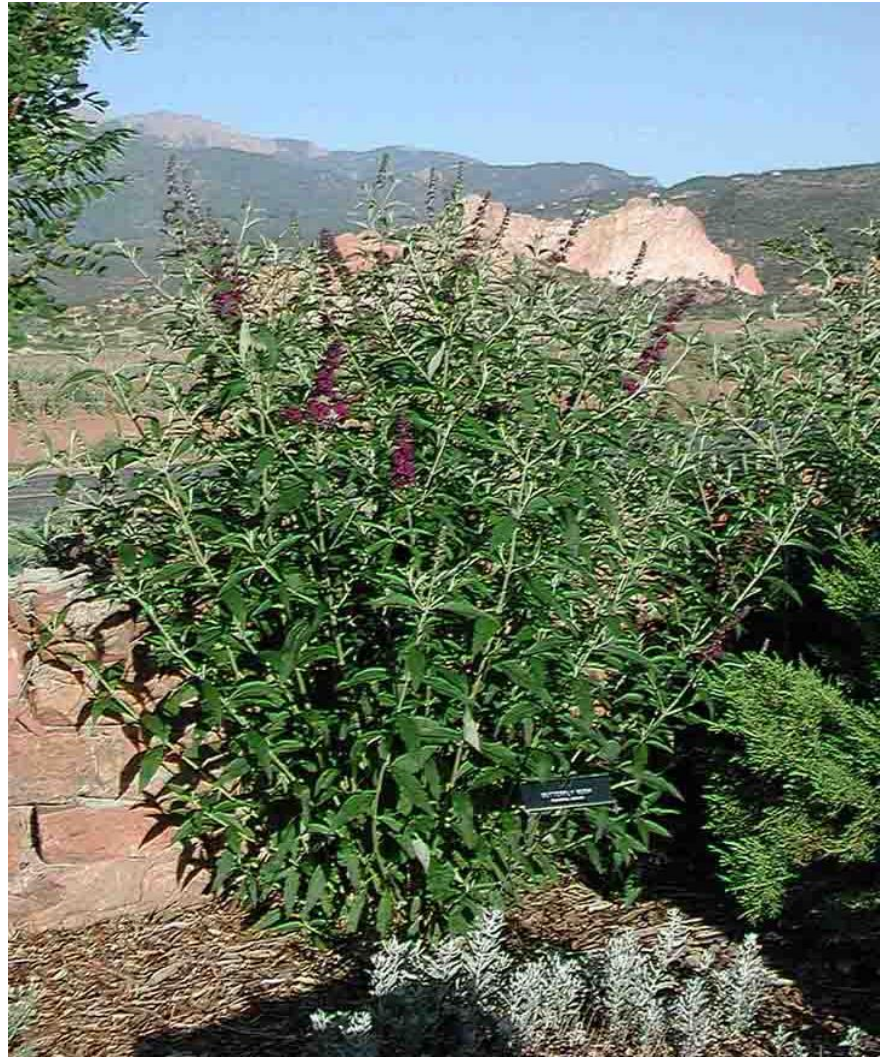
(BUD-lee-ah all-ter-nih-FOE-lee-ah)

Fountain Butterfly-bush



*Buddleja davidii* cultivars  
(BUD-lee-ah dah-VID-ee-eye)  
Butterfly bush





© Ray Daugherty



*Caesalpinia gilliesii*

(se-sal-PEE-nee-a gi-LEEZ-ee-ee)

Shrub Bird of Paradise

*Caesalpinia mexicana*

(se-sal-PEE-nee-a mex-ih-KAN-a)

Mexican Bird of Paradise

*Caesalpinia pulcherrima*

(se-sal-PEE-nee-a pul-KE-ri-ma)

Red Bird of Paradise, Pride of Barbados

*Calliandra eriophylla*  
(ka-lee-AN-dra air-ee-O-fi-la)  
Fairyduster

*Caragana arborescens*

(kare-ah-GAY-nah ar-bor-RES-senz)

Siberian Peashrub



*Genus: Sophora*

*Caragana pygmaea*

(kare-ah-GAY-nah pig-MAY-ee-ay)

Siberian Peashrub

*Caryopteris* × *clandonensis*  
(kare-ee-OP-ter-iss klan-don-EN-sis)  
Blue Mist Spirea





© Ray Daugherty

*Cercocarpus montanus*  
(ser-koe-KAR-pus mon-TAN-us)  
Mountain Mahogany



© Ray Da

*Chaenomeles japonica / speciosa*

(kay-NOM-el-eez)

Flowering Quince





Ray Daugherty

*Chamaebatiaria millefolium*

(KAM-ah-bah-tee-er-ee-ah mill-ah-FO-lee-um)

Fernbush



© Ray Daugherty

*Chrysothamnus nauseosus* (= *Ericameria nauseosa*)

( kry-so-THAM-nus naw-zee-OH-sus)

Rabbitbrush





© Ray Daugherty

*Cornus sericea*

(KOR-nus ser-REE-see-ah)

Redtwig and Yellowtwig Dogwood



*Cotinus coggygria*

(koe-TY-nus koe-GIG-ree-ah)

Common Smoke Tree





© Kay Daugherty



*Cotoneaster apiculatus*

(ko-TONE-ee-as-ter ah-pik-yew-LAY-tus)

Cranberry Cotoneaster





erty

*Cotoneaster divaricatus*

(ko-TONE-ee-as-ter di-vah-ri-KAH-tus)

Spreading Cotoneaster





*Cotoneaster horizontalis* cultivars  
(koh-TONE-ee-as-ter ho-ri-zon-TAH-lis)  
Rock Cotoneaster





© Keith A Williamson

*Cotoneaster lucidus*

(ko-TONE-ee-as-ter LEW-si-dus)

Hedge or Peking Cotoneaster



© Ray Daugherty



*Dalea frutescens*  
(DAY-lee-a fru-TES-enz)  
Black Prairie Dalea

*Dalea greggii*

(DAY-lee-a GREG-ee-ee)

Trailing Indigo Bush, Gregg's Prairie Clover

*Daphne × burkwoodii*

(DAF-nee burk-WOOD-ee-eye)

Burkwood Daphne

- 'Carol Mackie' Shown



*Ericameria laricifolia*

(air-ih-ka-MER-ee-a lar-ih-sih-FOL-ee-a)

Turpentine Bush



*Euonymus alatus*

(yew-ON-ih-mus ah-LAY-tus)

Winged Euonymus or Burning Bush



*Euonymus europaeus*

(yew-ON-ih-mus yu-ro-PAY-us)

European Spindletree



© Ray Daugherty

*Fallugia paradoxa*

(fal-LOO-gee-ah pare-ah-DOX-ah)

Apache Plume





*Forestiera neomexicana* (*F. pubescens*)  
(for-ES-tee-er-ah nee-oh-mex-ee-KAH-nah)  
New Mexico Privet





© Ray Daugherty

*Forsythia* spp.  
(for-SITH-ee-ah)  
Garden Forsythia





*Fouquieria splendens*

(fo-kwee-AIR-ee-a SPLEN-denz)

Ocotillo

*Frangula alnus* cultivars  
(syn. *Rhamnus frangula*)  
(FRAN-joo-lah ul-NUS)  
Glossy Buckthorn



*Genista tinctoria* 'Royal Gold'

(jeh-NIS-ta tink-TO-ree-a)

Royal Gold Compact Broom, Dyer's Greenweed





© Keith A Williamson



*Hibiscus syriacus*

(hy-BIS-kus seer-ee-AY-kus)

Rose of Sharon or Shrub Althea



© Ray Daugherty

*Hippophae rhamnoides*  
(hi-PO-fa-ee ram-NOI-deez)  
Sea Buckthorn





© Keith A Williamson

*Holodiscus dumosus*  
(ho-lo-DIS-kus du-MO-sus)  
Rockspirea





© Keith A Williamson

*Hypericum frondosum*

(hi-pe-REE-kum fron-DOE-sum)

Cedarglade St. Johnswort





© Keith A Williamson

*Jamesia americana*

(JAYM-zee-a a-mer-ih-KAN-a)

Waxflower, Cliffbush



*Kerria japonica* cultivars  
(KEH-ree-a ja-PON-i-ka)  
Japanese Kerria

*Kolkwitzia amabilis*

(kol-KWITZ-ee-a a-MAH-bi-lis)

Beautybush



© Keith A Williamson

*Ligustrum × vicaryi*

(lih-GUS-trum vih-KAR-ee-eye)

Golden Vicary Privet





© Ray

*Ligustrum vulgare*

(lih-GUS-trum vul-GAR-ay)

Common Privet





© Ray Daugherty

*Lonicera korolkowii*

(lon-ISS-er-ah kor-ul-KOW-ee-eye)

Blueleaf Honeysuckle





© R

*Lonicera tatarica*

(lon-ISS-er-ah tah-TAR-ih-kah)

Tatarian Honeysuckle



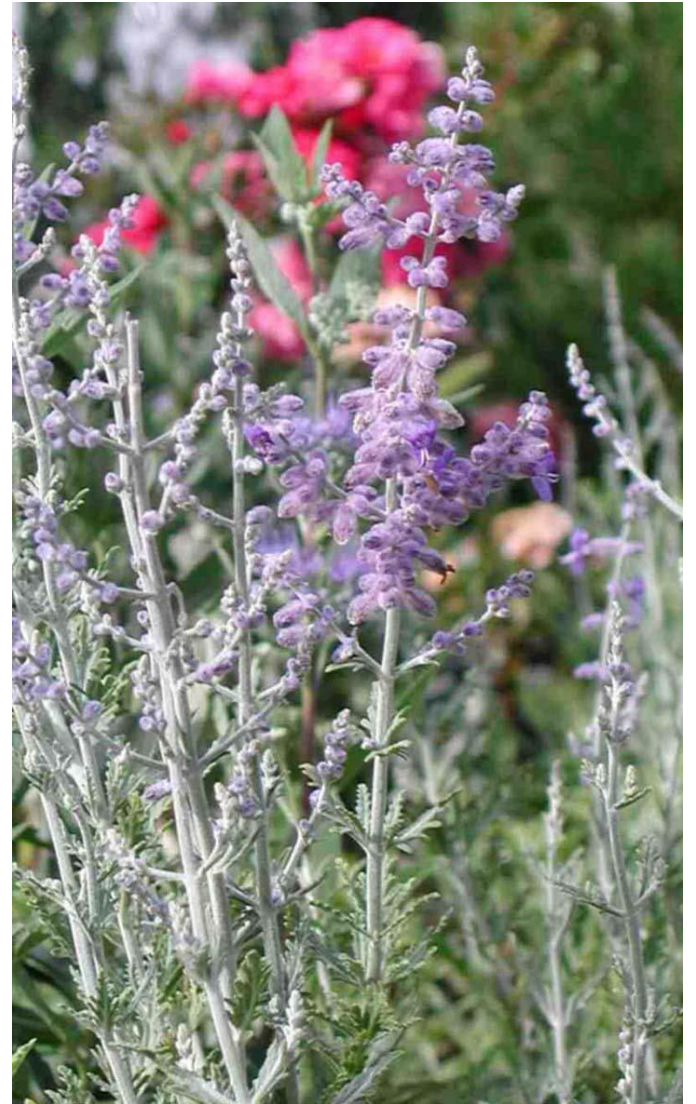
© Ray Daugherty

*Perovskia atriplicifolia*

(per-OV-skee-ah ah-trih-pliss-ih-FOE-lee-ah)

Russian Sage





*Philadelphus* spp.

(fil-ah-DEL-fus)

Mockorange





*Physocarpus* species & cultivars

(fy-so-KAR-pus)

Ninebark





© Ray Daugherty  
& Keith A Williamson

*Potentilla fruticosa* (*Dasiphora fruticosa* ssp.  
*floribunda*)

(poe-ten-TIL-lah fru-tih-KOE-sah)

Shrubby Cinquefoil



© Ray Daugherty



*Prunus besseyi* (*P. pumila* var. *besseyi*)  
(PREW-nus BEH-see-eye)  
Western Sandcherry, Bessey Cherry





© Ray Daugherty

*Prunus × cistena*

(PREW-nus sis-TEE-nah)

Purple Leaf Sand Cherry



© Ray Daugherty

*Prunus tomentosa*

(PREW-nus toe-men-TOE-sah)

Nanking or Manchu Cherry





© Ray Daugherty

*Rhus aromatica* 'Gro-Low'

(ROOS air-oh-MAT-ih-ka)

Gro-Low Sumac, Dwarf Fragrant Sumac



© Keith A Williamson

*Rhus glabra*  
(rus GLAB-rah)  
Smooth Sumac





© Ray Daugherty

*Rhus trilobata*

(rus try-loe-BAY-tuh )

three-leaf sumac



© Ray Daugherty

*Rhus typhina*  
(rus ty-FEE-nah)  
Staghorn Sumac





© Ray Daugherty

*Ribes alpinum*  
(RY-beez al-PINE-um)  
Alpine Currant





© Ray Daugherty

*Ribes aureum* (syn. *R. odoratum*)  
(RY-beez AW-ree-um)  
Golden Currant





*Rosa (foetida)*  
(ROE-sah FEH-tih-dah)  
Austrian Brier Rose





© Ray Daugherty

*Rosa (glauca)*  
(ROE-sah GLOK-ah)  
Red Leaf Rose



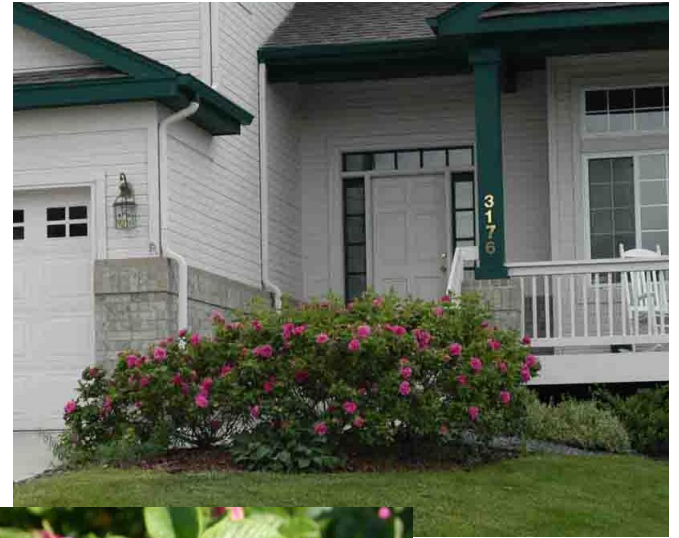


*Rosa (rugosa)*  
(ROE-sah roo-GO-sah)  
Rugosa Rose





© Kay Daugherty



*Rubus deliciosus*

(REW-bus duh-LEE-see-oh-sus)

Boulder Raspberry





© Ray Daugherty

*Salix (caprea)*  
(SAY-lix CAP-ree-ah)  
Pussy Willow



© Ray Daugherty

*Salix (exigua)*  
(SAY-lix ex-ZIH-joo-ah)  
Coyote Willow





© Ray Daugherty

*Salix (irrorata)*

(SAY-lix ear-row-RAH-tah)

Bluestem Willow



© Ray Daugherty

*Salix (purpurea)*  
(SAY-lix per-per-EE-ah)  
Arctic Willow





© Ray Daugherty

*Sambucus canadensis* (*S. nigra* ssp. *canadensis*)  
(sam-BOO-kus kan-ah-DEN-sis)  
American Elder, Elderberry



© Ray Daugherty

*Senna nemophila* (syn. *Cassia nemophila*)

(SEN-a ne-MAH-fee-la)

Desert Cassia, Australian Senna



*Shepherdia argentea*

(shah-PER-dee-ah ar-JEN-tee-ah)

Buffaloberry



© Ray Daugherty

*Sorbaria sorbifolia*

(sor-BER-ee-ah sor-bah-FO-lee-ah)

Ural False Spirea





*Spartium junceum*  
(SPAR-tee-um YUNG-kee-um)  
Spanish Broom

*Sphaeralcea ambigua*  
(sfie-RAL-see-a am-BIG-u-a)  
Apricot Globemallow

*Spiraea × bumalda and Spiraea japonica*  
(spy-REE-ah boo-MAL-dah / juh-PON-i-ka )  
Bumald / Japanese Spirea



Shirley Magnolia



*Spiraea nipponica* 'Snowmound'  
(spy-REE-ah nip-PON-ih-kah)  
Snowmound Spirea



© Ray Daugherty

*Spiraea* × *vanhouttei*  
(spy-REE-ah van-HOO-tee-eye)  
Vanhoutte Spirea



© Ray Daugherty



*Symphoricarpos albus*  
(sim-for-ih-KAR-pos AL-bus)  
Common Snowberry



© Ray Daugherty

*Symphoricarpos* × *chenaultii*

(sim-for-ih-KAR-pos she-NAWL-tee-ee)

Chenault Coralberry

*Symphoricarpos orbiculatus*

(sim-for-ih-KAR-pos or-bik-ew-LAH-tus)

Coralberry





©Keith A Williamson

*Syringa × chinensis*  
(sy-RIN-gah chin-EN-sis)  
Chinese Lilac



© Ray Daugherty

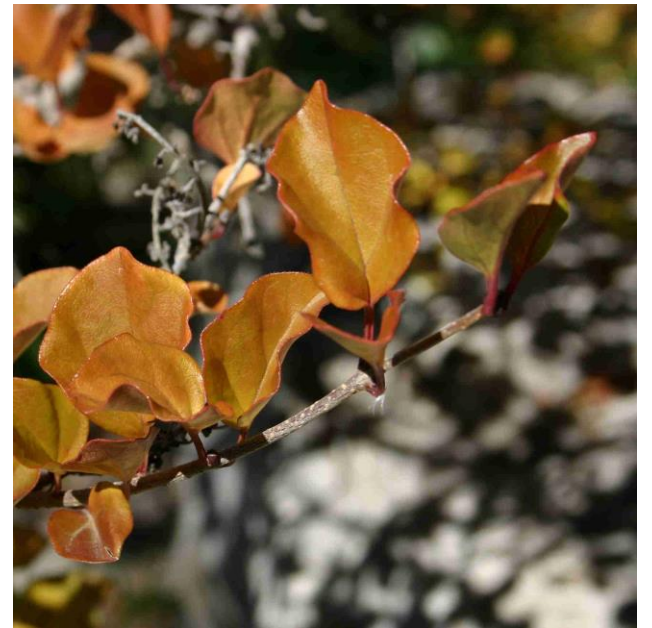
*Syringa* × *hyacinthiflora* cultivars  
(sy-RIN-gah hy-a-cinth-i-FLO-ra)  
Early Lilac





© Keith A Williamson

*Syringa meyeri* 'Palibin'  
(sih-RIN-gah MY-er-eye)  
Dwarf Korean Lilac



© Ray Daugherty

*Syringa patula* 'Miss Kim'  
(sih-RIN-gah PAT-yew-lah)  
Miss Kim Lilac





© Ray Daugherty

*Syringa persica*  
(sih-RIN-gah PER-si-ka)  
Persian Lilac

*Syringa × prestoniae*

(sy-RIN-gah press-TONE-ee-aye)

Canadian Lilac



© Ray Daugherty



*Syringa vulgaris* & cultivars  
(sy-RIN-gah vul-GAR-is)  
Common Purple Lilac



© Ray Daugherty

*Tecoma stans* cultivars & hybrids  
(te-KO-ma stanz)  
Yellow Bells, Yellow Trumpetbush

*Vauquelinia californica*

(vow-kwe-LEE-nee-a kal-i-FOR-ni-ka)

Arizona Rosewood



*Viburnum* × *burkwoodii*  
(vy-BURN-um berk-WOOD-ee-eye)  
Burkwood Viburnum



*Viburnum lantana*  
(vy-BURN-um lan-TAN-ah)  
Wayfaring Tree Viburnum



© Ray Daugherty



*Viburnum lentago*  
(vy-BURN-um lin-TAY-go)  
Nannyberry Viburnum



ugherty

*Viburnum opulus*  
(vy-BURN-um OP-yew-lus)  
European Cranberrybush Viburnum



© Ray Daugherty



*Viburnum* × *rhytidophylloides* 'Alleghany'  
(vy-BURN-um rye-tih-doe-fye-LOY-deez)  
Alleghany Viburnum



© Ray Daugherty

*Viburnum trilobum* (*V. opulus* var. *americanum*)  
(vy-BURN-um try-LOW-bum)  
American Cranberry Viburnum





*Weigela florida*

(wy-JEE-lah FLOOR-ih-dah)

Weigela

